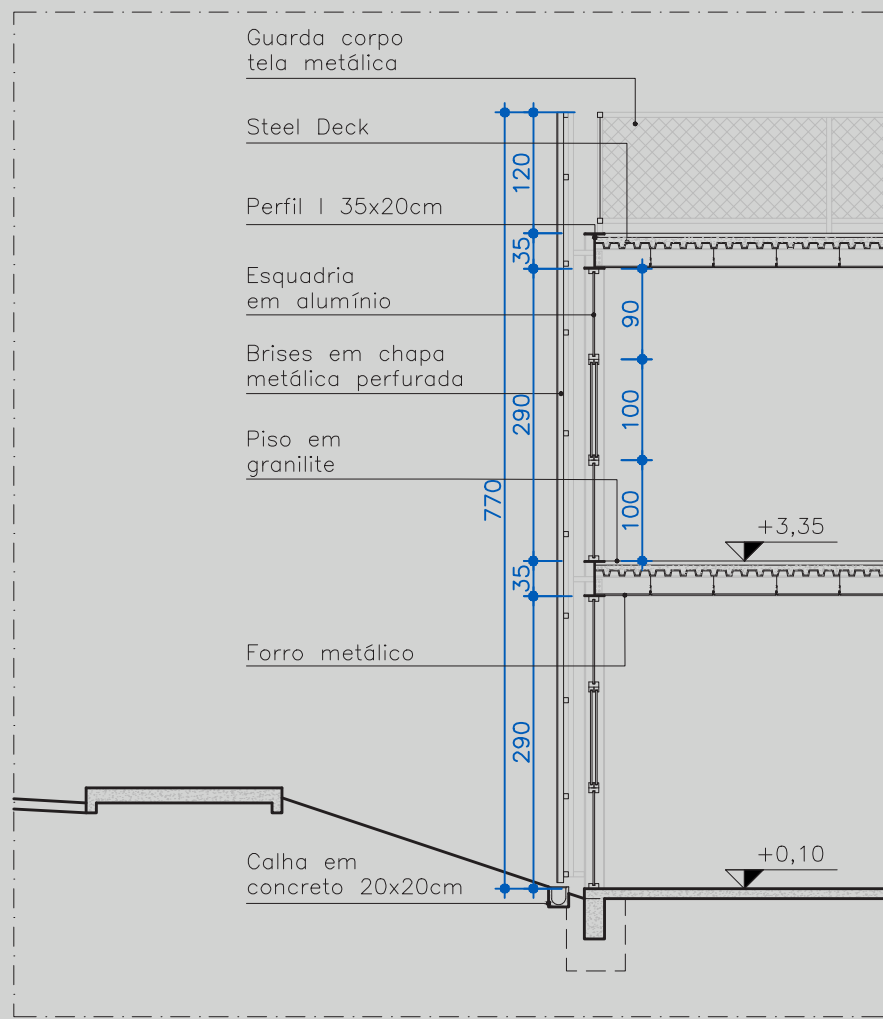
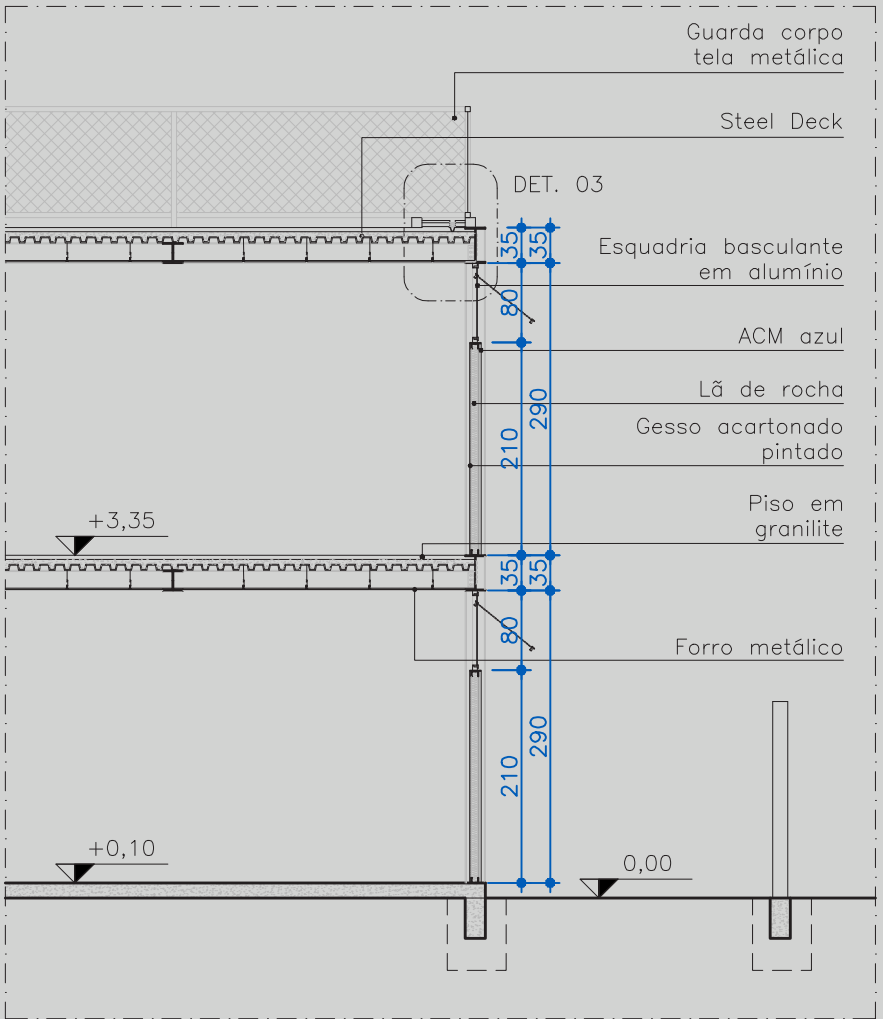


1 PLANTA DETALHE SALA DE ATIVIDADES E BANHEIRO  
ESCALA 1:50



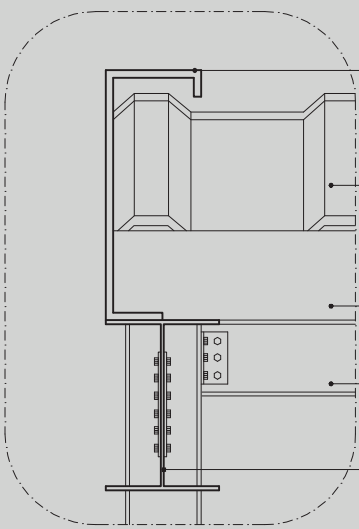
2 DET. FACHADA SUDOESTE  
ESCALA 1:75



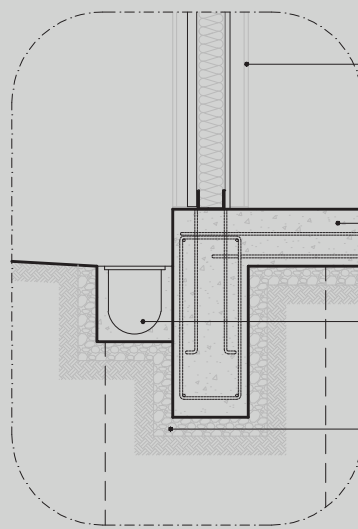
3 DET. FACHADA NOROESTE  
ESCALA 1:75



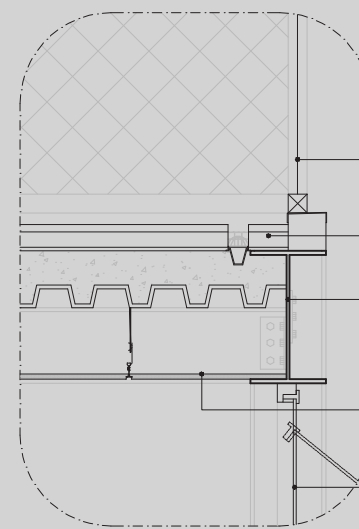
(...). "Hélio Duarte argumenta ainda que "a criação de 'ambientes' é sumamente desejável": "Sempre que possível a natureza deve penetrar nas salas e nas diversas peças que constituem um grupo". O problema escolar e a arquitetura (Habitat n° 4, 1951)



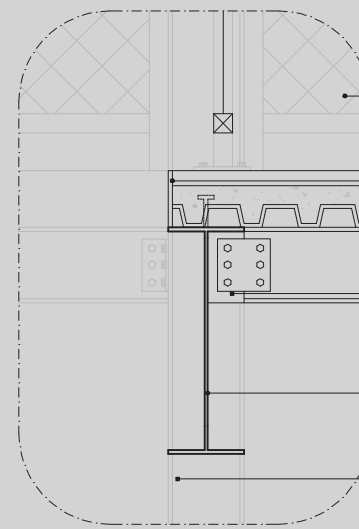
4 DET. 01 - COBERTURA  
ESCALA 1:20



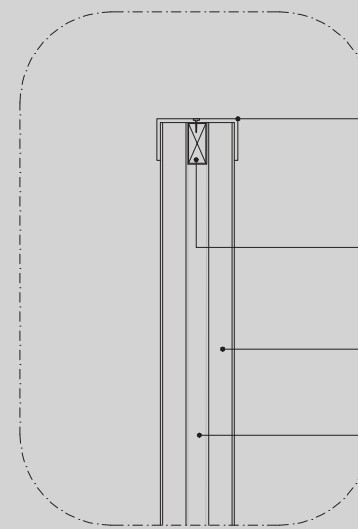
5 DET. 02 - FUNDAÇÃO  
ESCALA 1:20



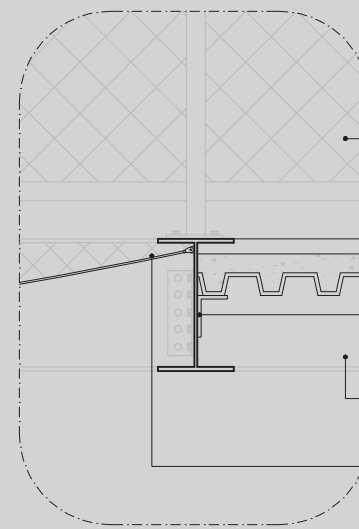
6 DET. 03 - STEEL DECK  
ESCALA 1:20



7 DET. 04 - STEEL DECK  
ESCALA 1:20



8 DET. 05 - G.CORPO  
ESCALA 1:20



9 DET. 06 - REDE  
ESCALA 1:20

DETALHES