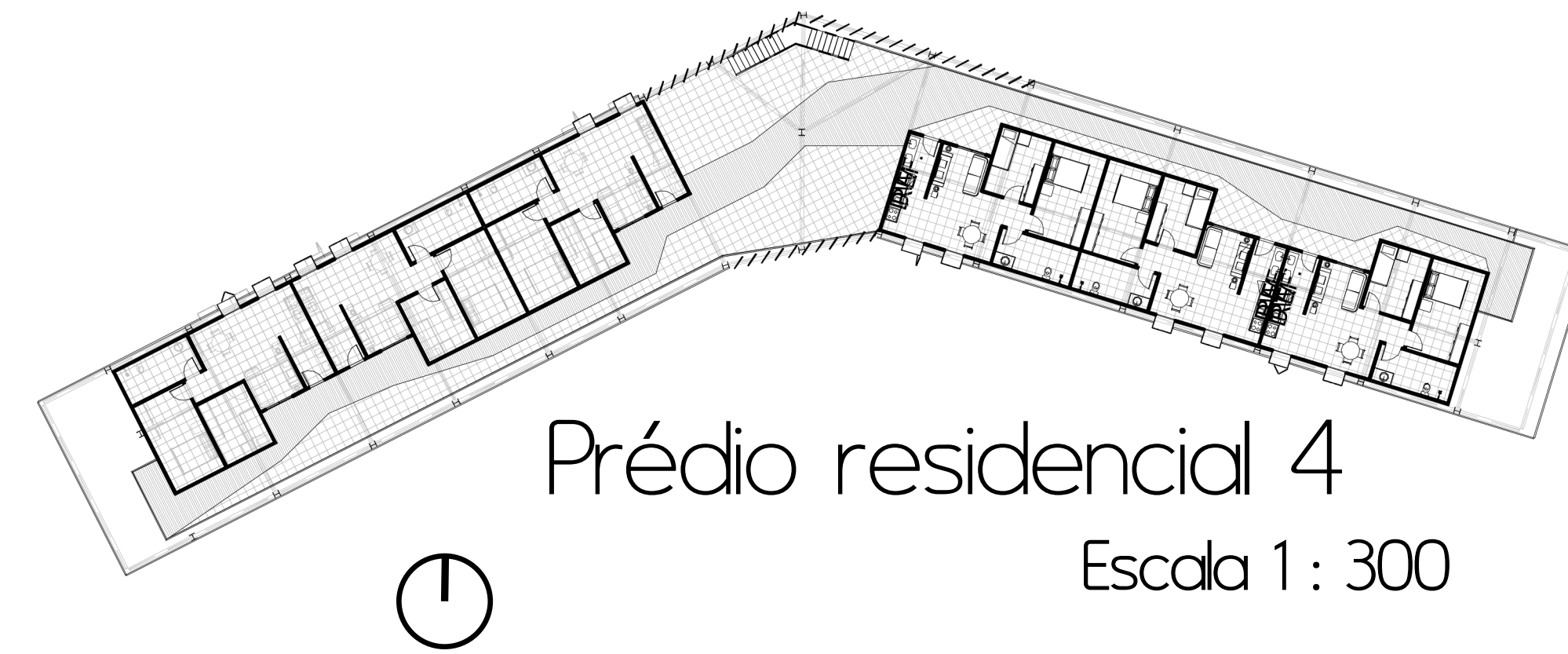


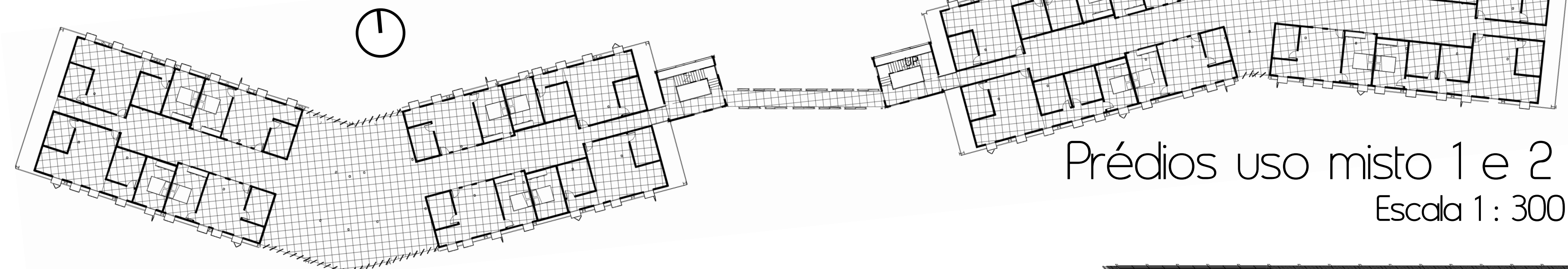


🕒 Prédio residencial 1
Escala 1 : 150

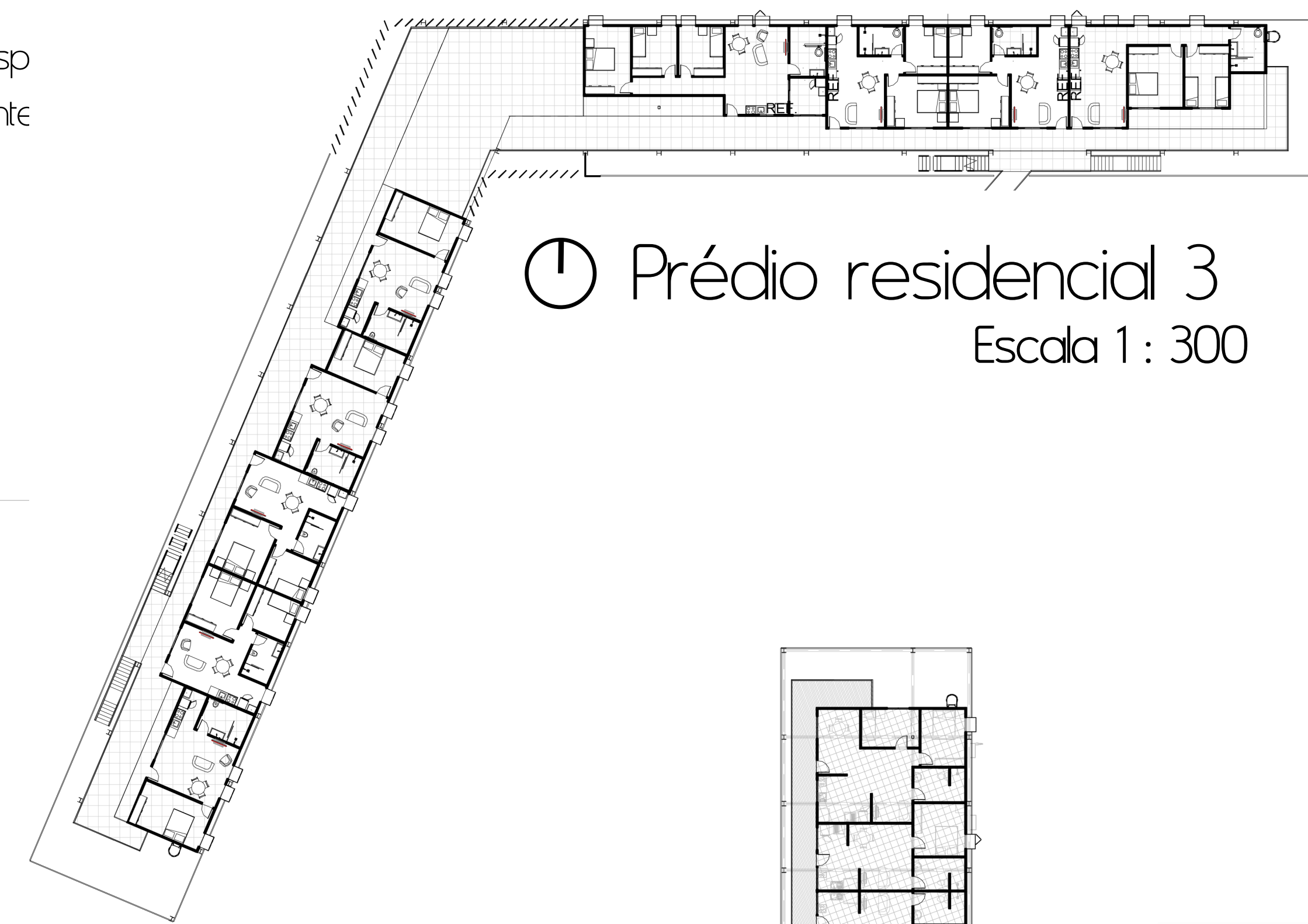
As unidades habitacionais estão disp
edifícios, sendo 5 de uso exclusivamente
e 2 de uso misto.



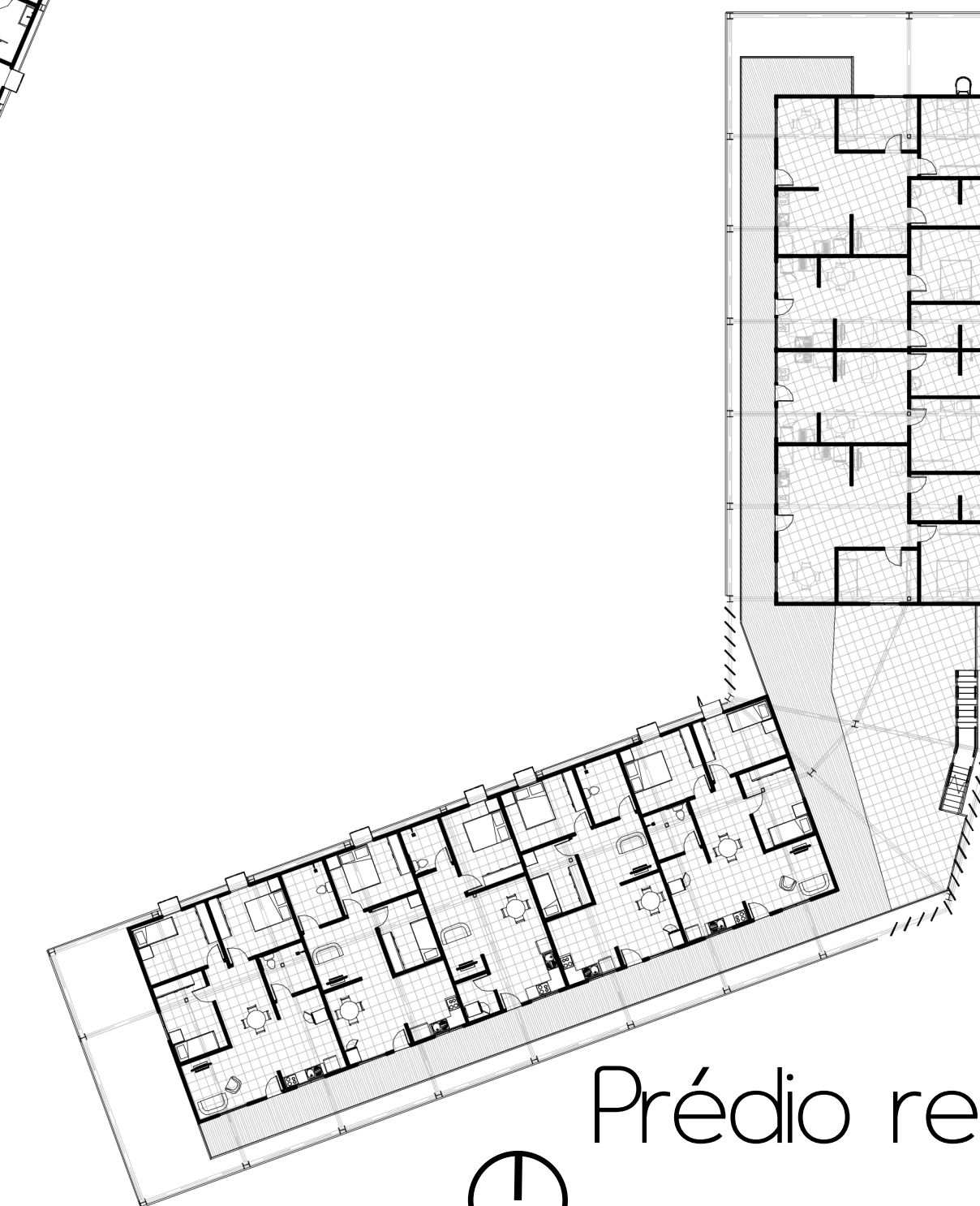
🕒 Prédio residencial 4
Escala 1 : 300



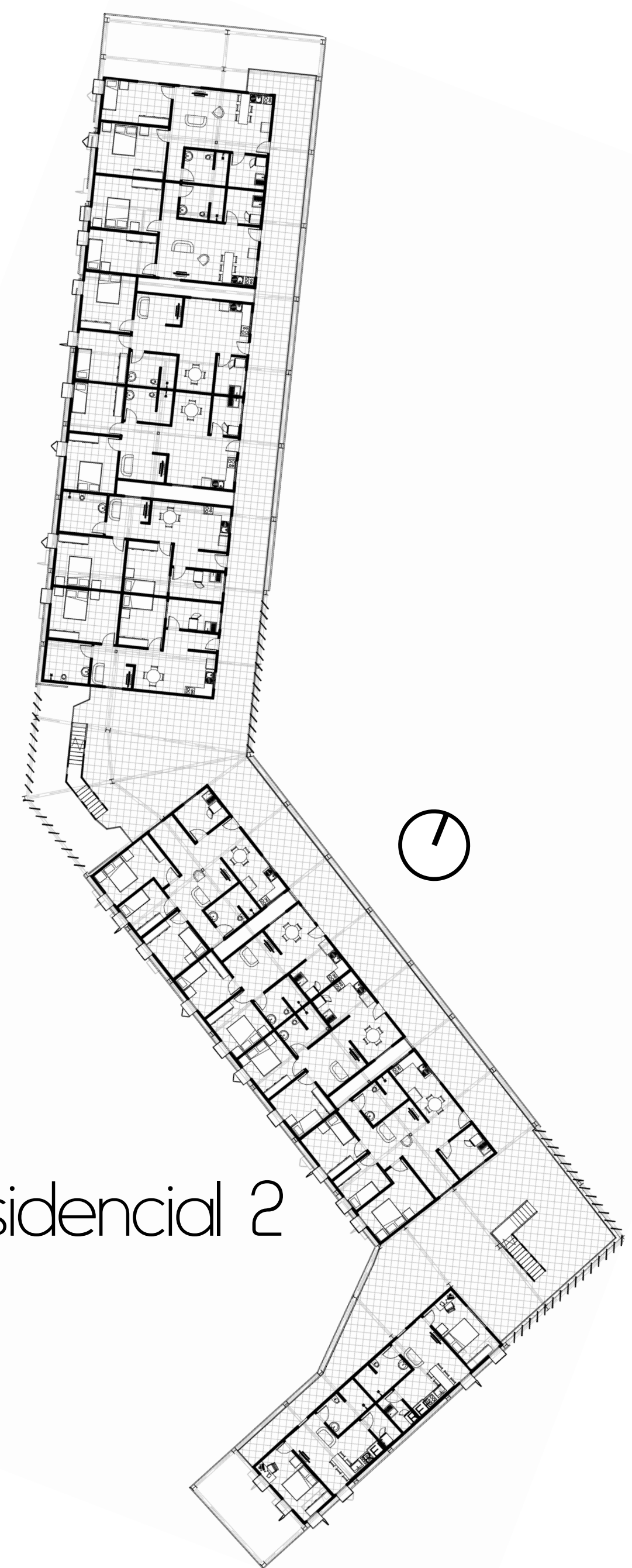
🕒 Prédios uso misto 1 e 2
Escala 1 : 300



🕒 Prédio residencial 3
Escala 1 : 300



🕒 Prédio residencial 5
Escala 1 : 300



Prédio residencial 2



CORTE B
ESCALA 1 : 200